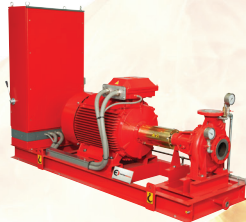
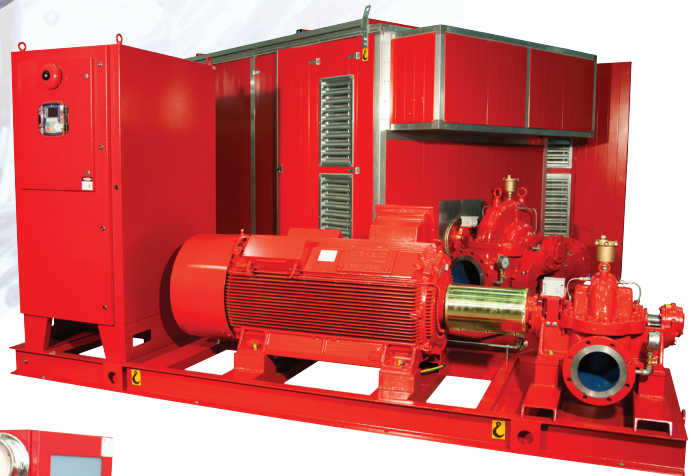




**ELECTRAIMPIANTI**

## FIRE & WATER DIVISION PRODUCTS RANGE



**ELECTRAIMPIANTI**



Via Adone Perin 1  
36073 Cornedo Vic.no (VI) - Italy



Tel. +39 0445 490445  
0445 950557  
Fax +39 0445 490456



info@electraimpianti.it  
www.electraimpianti.it





Electraimpianti designs and manufactures firefighting and process packages:

- diesel engine driven pumps
  - electric motor driven pumps
  - skid version
  - containerized / sound proofed version
- complete with:
- control panels, diesel tank,
  - piping for suction, delivery and tests,
  - start-up, commissioning & word-wide service

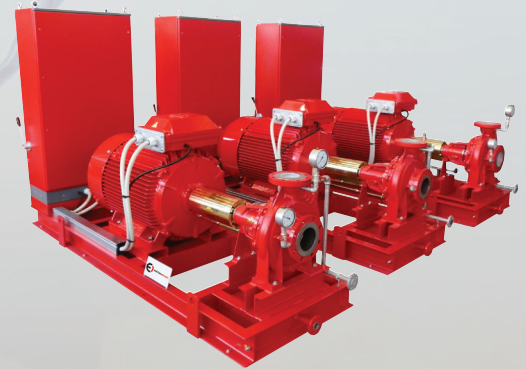
**All designed and supplied according to EN12845, NFPA20, FM, UL and to the project environmental conditions, ALSO FOR OFF-SHORE APPLICATIONS.**



**End-suction NORM type pumps:**

Norm series range of pumps are manufactured fully complying to the international standard EN 733 and EN 22858. The standard covers both performance and dimensions. DIN 24256 standard pumps are also available.

The pump includes single and double stages as well as with heavy duty bearing constructions. Norm pumps are also available in vertical arrangement and back pull-out design for simple and quick maintenance.



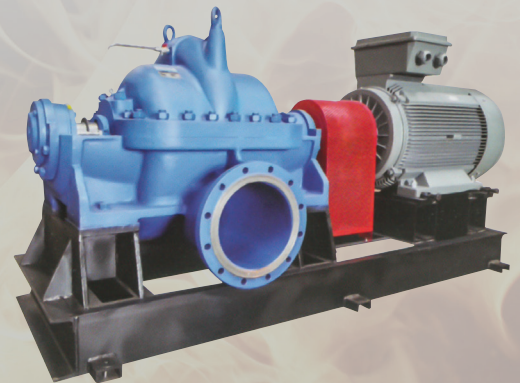
Capacity (m3/h)	14 - 3100
Head (mWc)	5 - 90 (1500 rpm)
Discharge size (mm)	Ø 32 - 500

**Split-case CEP type pumps:**

It is designed as axially split case, single stage, double suction. Available in horizontal and vertical configuration and direction of rotation to suit pump station layout.

Split-case pumps are installed in the pulp and paper mills, in water and sewage works, in the power plants, in the cooling water systems, Iron & steel works and fire-fighting applications. Also UL approved.

There are many versions of basic design.



Capacity (m3/h)	30 - 9500
Head (mWc)	10 -180
Discharge size (mm)	Ø 65 -700

**API - 610 PROCESS and NORM-HP hot water pumps:**

API-Process pumps are special type of pumps generally used for pumping fluids in complicated processes. They are manufactured according to API 610. Their long endurance life, reliable and robust construction make them suitable to meet requirements of most demanding applications. Hot fluids, fluids without particles or fluid with small amount of particles can be pumped with these pumps. Mechanical construction is different than that of conventional pumps and they are specially designed.

Capacity (m3/h)	50 -1000
Head (mWc)	15 - 90
Discharge size (mm)	Ø 50 - 250
Operating temperatures (t)	up to + 230° C





**CAP series sewage and waste water pumps:**

CAP series consist of centrifugal sewage and waste water pumps.

They are used for pumping muddy liquids like sewage and other solid-water mixture with high viscosity. They are available in different mounting arrangements:

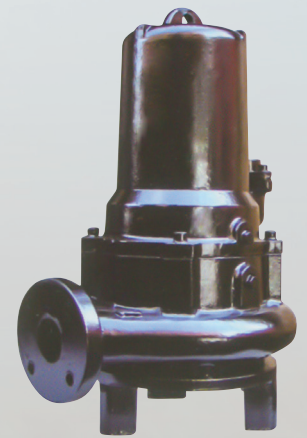
- Horizontal dry-pit (HK)
- Vertical dry-pit mono block (VM)
- Vertical wet-pit with suspension pipe (VY)
- Vertical dry-pit with universal shaft drive (VS)



**PARPO type, submersible pump with grinder blade:**

Grinder pumps are ideal for residential, commercial and resort applications offering significant pipe cost saving.

(\*) Different voltages and frequencies are available on request.



Capacity (m3/h)	3 - 40500
Head (mWc)	3 - 42
Power (kW)	1.5 - 4
Voltage / frequency	400V / 50Hz (*)
Discharge size (mm)	Ø 40 and 50

**DAS/DAC-S type submersible pumps:**

They are designed to operate under water.

DAS series has single mechanical seal.

DAC-S series has double mechanical seals.

DAS/DAC-S series pumps have two different installation form;

- Automatic coupling system (with duck foot bend)
- Vertical free standing hose connection

(\*) Different voltages and frequencies are available on request.



	DAS	DAC
Capacity (m3/h)	300	3000
Head (mWc)	4 - 40	5 - 60
Power (kW)	1.5 - 11	15 - 400
Discharge size (mm)	Ø 50 - 150	Ø 80 - 500
Voltage / frequency	400V / 50Hz (*)	400V / 50Hz (*)
Solid size (mm)	Ø 35 - 120	Ø 40 - 200

**DAC-SC/Y type submersible pumps:**

Submersible waste water pumps have also two different types for dry pit and wet installations:

1. DAC-SC pumps: Around the motor of the submersible pump a cooling jacket is fitted.

2. DAC-Y pumps: Submersible pump motor cooled by oil which fill the motor casing and circulates in motor & stator windings.

(\*) Different voltages and frequencies are available on request.

Capacity (m3/h)	10 - 3000
Head (mWc)	5 - 85
Power (kW)	15 - 400
Discharge size (mm)	Ø 50 - 500
Voltage / frequency	400V / 50Hz (*)
Solid size (mm)	Ø 40 - 200





**PROCESS type pumps:**

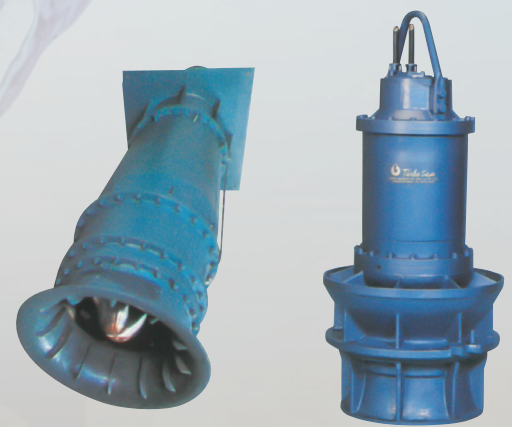
Single-stage, semi open or closed impeller, mechanical sealing, volute case process pumps, designed as specified by DIN 24256 standards. Applications include chemical, petroleum and food industries, acids, alkaline solutions, corrosive process liquids and pulps.



Capacity (m3/h)	8 - 720
Head (mWc)	5 - 90
Discharge size (mm)	Ø 40 - 150
Operating temperature	-20°C + 140°C

**Mixed (K) and axial (E) flow EKS - DAC E/K type pumps:**

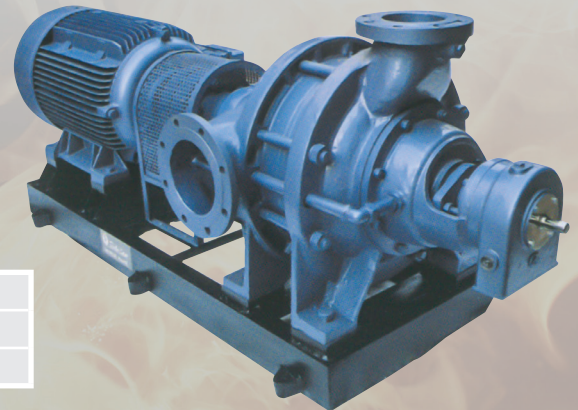
Vertical axial and mixed flow pumps with high flow rates and low delivery heads for drainage and irrigation systems c/w column pipe (EKS type) are also available in submersible version (DAC E/K type). Submersible version pumps are installed by lowering into steel-tube enclosures or concrete cells thus ensuring low initial costs.



	EKS-E/K	DAC-E/K
Capacity (m3/h)	300 - 10000	300 - 2500
Head (mWc)	1 - 60	3 - 18
Tube size (mm)	Ø 200 - 1200	Ø 700 - 1400

**Multi stage - KA T type pumps:**

KAT series pumps are for medium and high pressure applications. Horizontal centrifugal with impellers mounted on an extended shaft, side suction, top delivery with position interchangeability option. KAT series pump are manufactured with soft packing as a standard, mechanical seal is available optionally.



Capacity (m3/h)	15 - 500
Head (mWc)	20 - 350
Discharge size (mm)	Ø 050 - 200



**ELECTRAIMPIANTI**



Via Adone Perin 1  
36073 Cornedo Vic.no (VI) - Italy



Tel. +39 0445 490445  
0445 950557

Fax +39 0445 490456



info@electraimpianti.it  
www.electraimpianti.it

